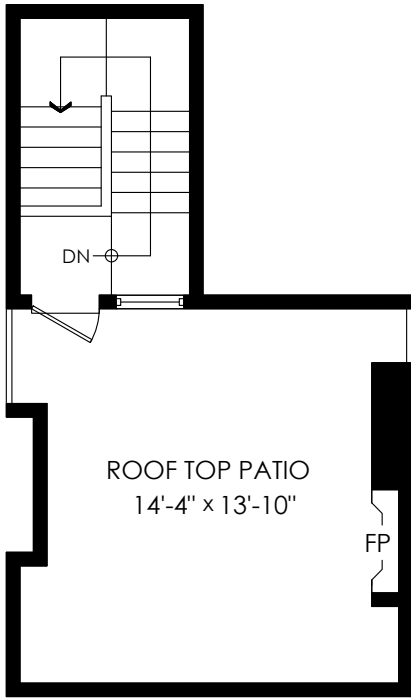


Main Floor:	609 sq.ft.
Upper Floor:	595 sq.ft.
Roof Top Entry Floor:	82 sq.ft.
<b>Total Livable:</b>	<b>1,286 sq.ft.</b>

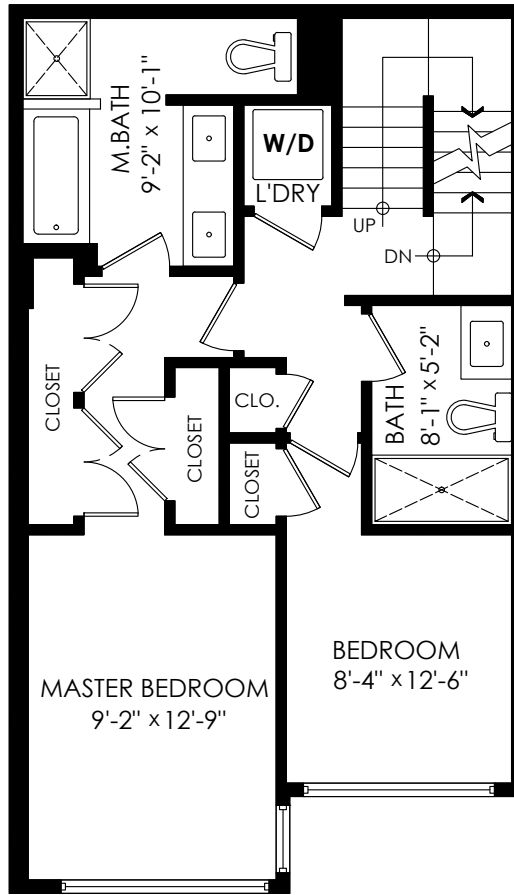
Patio:	206 sq.ft.
Roof Top Patio:	214 sq.ft.
<b>Total Extras:</b>	<b>420 sq.ft.</b>

Ceiling Height: 8'-5"



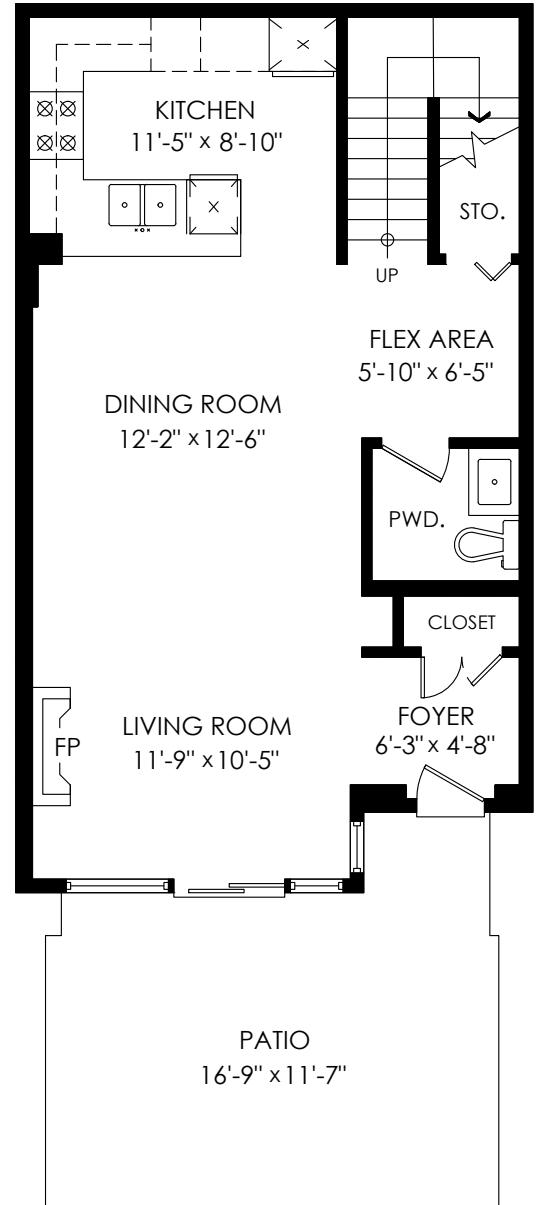
**Roof Top Entry Floor Plan**

Floor Area: 82 sq.ft.



**Upper Floor Plan**

Floor Area: 595 sq.ft.



**Main Floor Plan**

Floor Area: 609 sq.ft.

